

BUILDERS & MANUFACTURERS TRUST DRAW WORKS

Clarity for Every Trade | Detailed shop drawings and millwork drawings that eliminate guesswork for framers, installers, and GCs

Fewer Costly Reorders | Precise dimensions and finish details prevent expensive delays and change orders

Seamless Integration | Wall, window, and door finishes designed to work together. No gaps, no surprises

Luxury-Focused | Deep experience with high-end homes, premium materials, and multimillion-dollar builds

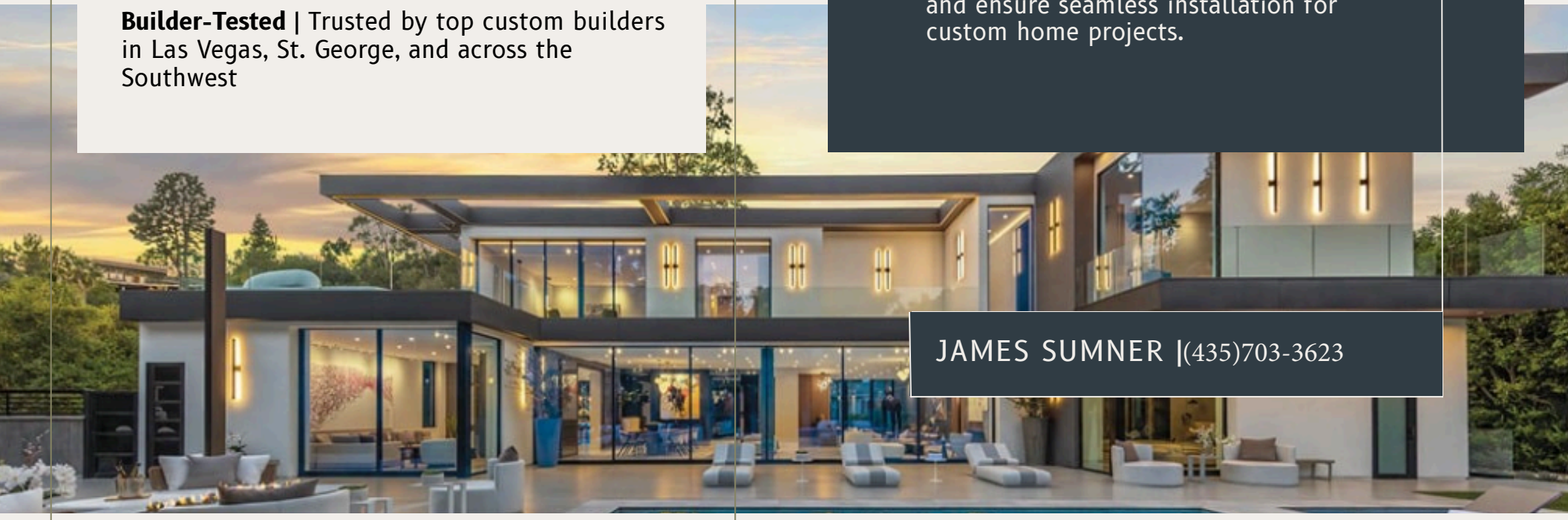
Builder-Tested | Trusted by top custom builders in Las Vegas, St. George, and across the Southwest

DRAW WORKS DRAFTING & DESIGN

- Precision Drawings
- Flawless Installs
- Elevated Results

Expert architectural drafting for custom luxury window and door systems. Built to eliminate guesswork and ensure seamless installation for custom home projects.

JAMES SUMNER |(435)703-3623



SERVICES

AutoCAD shop drawings

Millwork drawings

Detailed wall section integration

Custom elevation and cut-down drawings

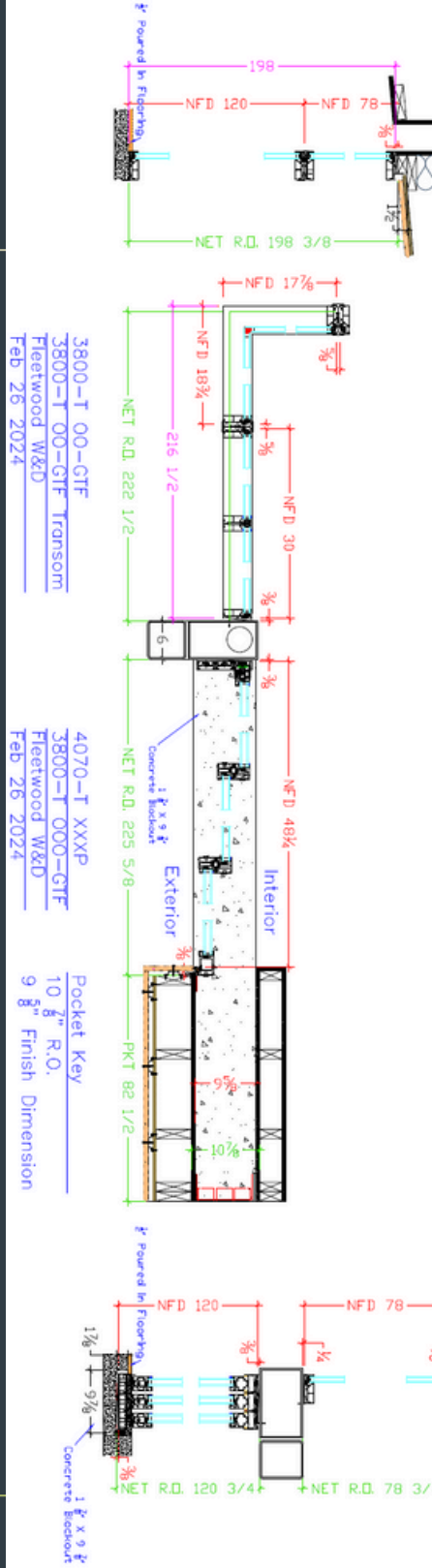
Exterior finish coordination [stucco, stone, TNG, fascia, etc.]

Field measurement and as-built documentation

Product-specific detailing from leading manufacturers

Drafting support for architects, builders, and installation teams

DRAW WORKS



CREDENTIALS

Owner-operator James Sumner brings over 10 years of experience drafting for commercial builds and high-end luxury homes with multimillion-dollar window/door packages.

- Extensive hands-on experience with major manufacturers: Fleetwood | Weathershield | Cortizo | Jeld-Wen | International WD
- Experience with luxury home builders: Merlin Contracting | Blaser Construction | Raftery Homes | Blue Heron
- Track record of accuracy and attention to detail
- Former U.S. Army Team Leader, Purple Heart recipient